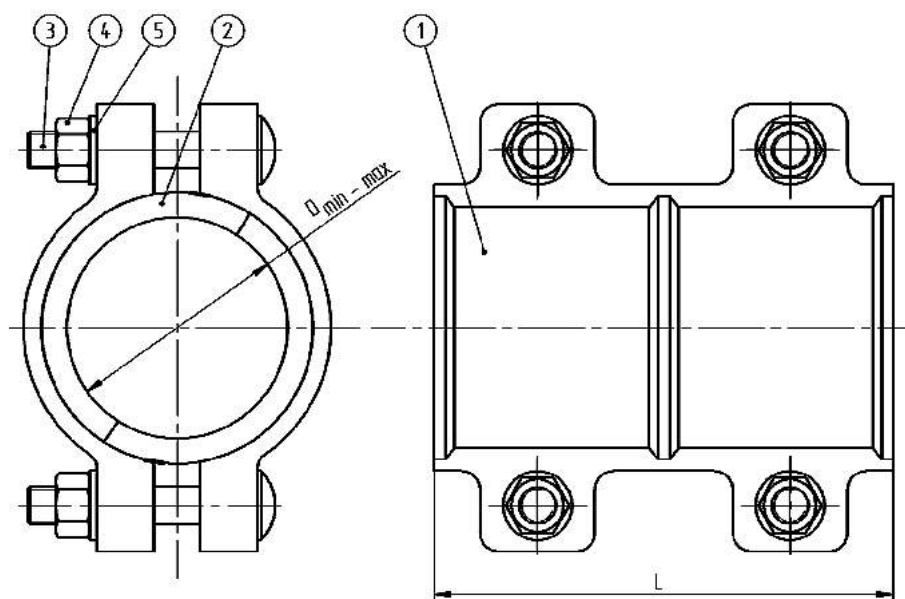


Split collar (two-parts) "DUEPI" DN15-DN50



■ USE:

- For steel pipes for pipelines.

■ MATERIALS:

- 1 - body - ductile cast iron protected with epoxy powder coating,
- 2 - gasket - EPDM or NBR rubber,
- 3-5 - galvanized steel,
- optional: nuts and bolts - stainless steel.

The product has been certified as suitable for contact with potable water.

DN	Diameter [mm] D _{min} - D _{max}	Weight [kg]	Number of bolts	Length [mm] L	Product code
15	20 - 23	2,00	4xM12	120	
20	25 - 28	2,30	4xM12	120	
25	31 - 35	2,60	4xM12	120	
32	41 - 45	3,00	4xM12	135	
40	48 - 52	3,50	4xM12	140	
50	57 - 61	3,60	4xM12	140	