



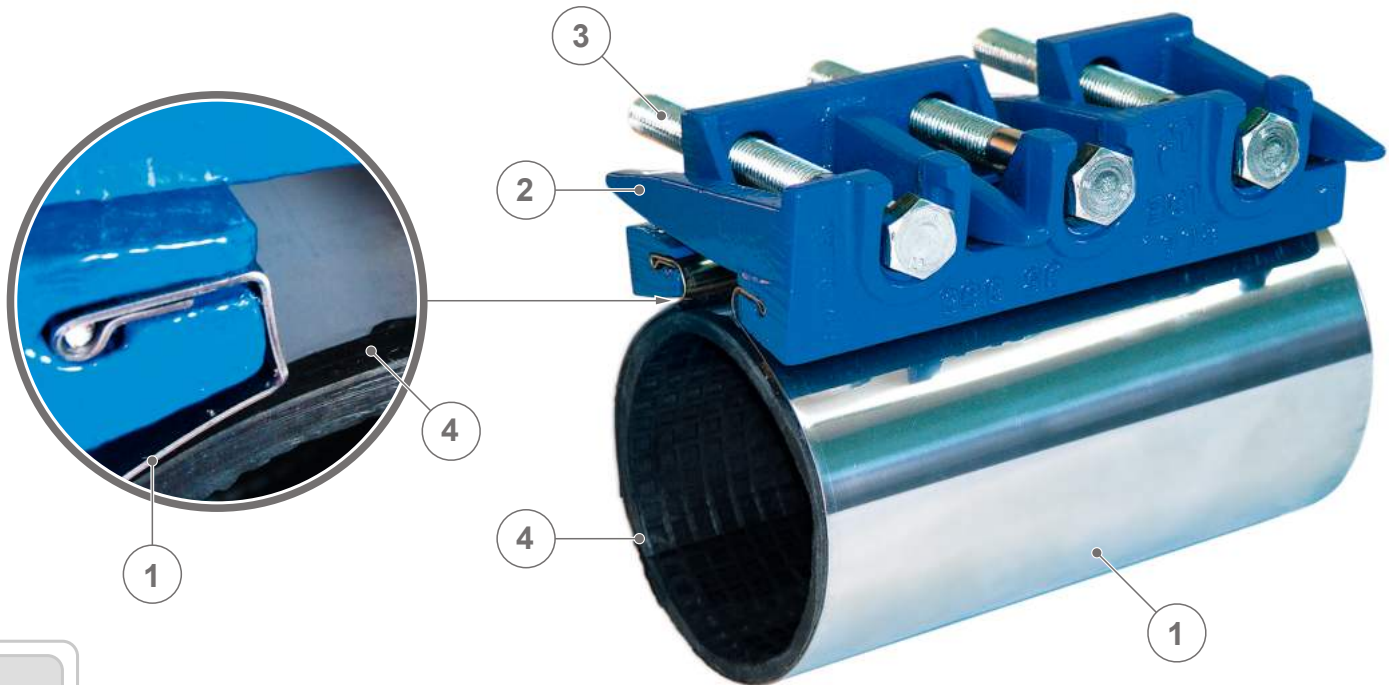
Information on repair clamps manufactured by IGE

- Our repair clamps are designed for use on pipelines made from various materials. All parts of our clamps possess adequate corrosion protection. Our price list always specifies the outside diameter (OD) of pipes on which a particular clamp could be fitted. The following table contains outer diameters (DZ) depending from nominal size (DN) of the most popular types of pipes. However, note that the actual diameters, especially for older pipelines may show a significant derogation from the standard dimension.

Outside diameters of typical pipes [mm]

DN	Cast Iron	Welded steel	Threaded steel	PCV or PE	Az - cem PN10	Az - cem PN12	GRP resin
32	46	38	42,4	40	-	-	-
40	56	44,5	48,3	50	-	-	-
50	66	57	60,3	63	-	-	-
60	77	-	-	-	-	-	-
65	82	76	76,1	75	-	83	-
70	87	-	-	-	-	-	-
80	98	85	85	90	98	100	-
90	108	-	-	-	-	-	-
100	118	108	114	110/125	120	126	-
125	144	133	-	140	149	153	168
150	170	159	168	160	178	184	-
175	196	191	-	180	-	-	-
200	222	216	219	225/200	236	244	220
225	246	241	-	225	-	-	-
250	274	267	273	280/250	288	300	272
275	300	292	-	280	-	-	-
300	326	318	324	315	346	360	324
315	341	-	-	-	-	-	-
325	352	343	355,6	-	-	-	-
350	378	368	-	355	404	420	376
375	403	394	-	-	-	-	-
400	429	419	406,4	400	480	488	401/427
425	454	-	-	-	-	-	-
450	480	470	-	450	-	-	-
475	506	-	-	-	-	-	-
500	532	521	508	500	565	582	501/530
525	557	-	-	-	-	-	-
550	583	-	-	560	-	-	-
600	634	622	610	630	678	698	616
650	686	-	-	-	-	-	-
700	738	720	711	710	-	-	-
750	790	-	-	-	-	-	718
800	842	820	813	800	-	-	820
900	945	920	-	-	-	-	924
1000	1048	1020	-	1000	-	-	1026
1100	1152	1120	-	-	-	-	1099
1200	1256	1220	-	-	-	-	1279

Wrap around repair clamp „INOXGIS”

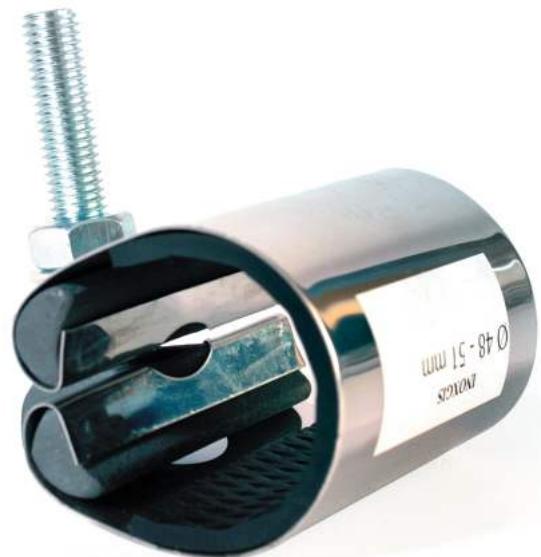


■ USE:

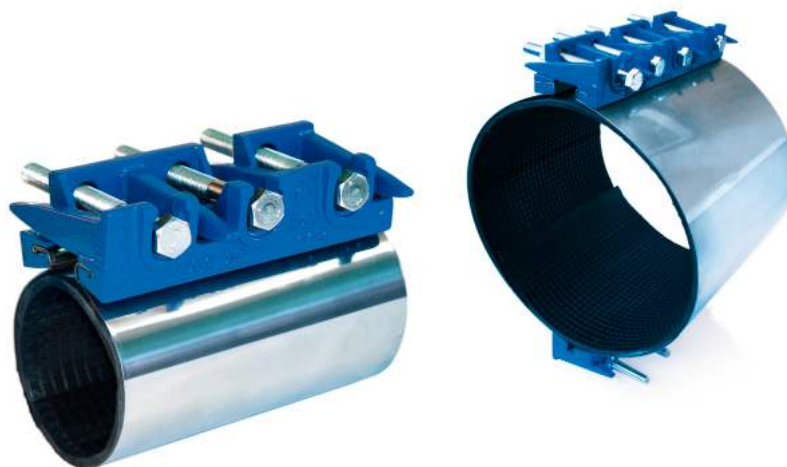
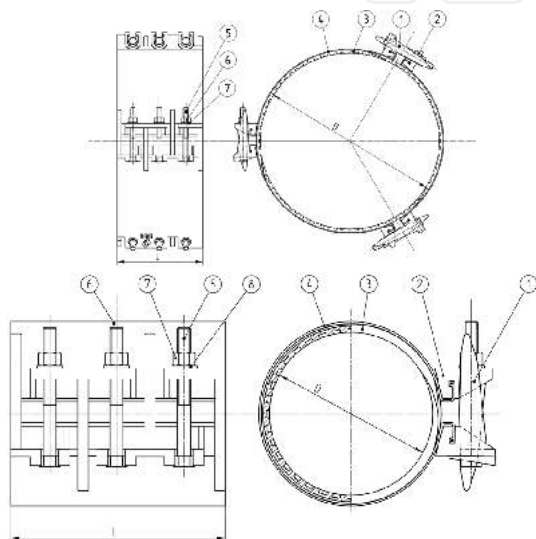
- For repair of pipelines made of different materials.
- The product has been certified as suitable for contact with potable water.

■ MATERIALS:

- 1 - clamp-stainless steel. Special anchoring band carries a significant load evenly.
- 2 - lugs - heavy duty ductile cast iron protected with epoxy powder coating,
- 3 - bolts - galvanized steel or stainless steel (option),
- 4 - gasket - stainless steel sheet bonded into EPDM or NBR rubber.



Wrap around repair clamp „INOXGIS”



■ USE:

- For repair of pipelines made of different materials.
- Other sizes of bands are made to order.

■ MATERIALS:

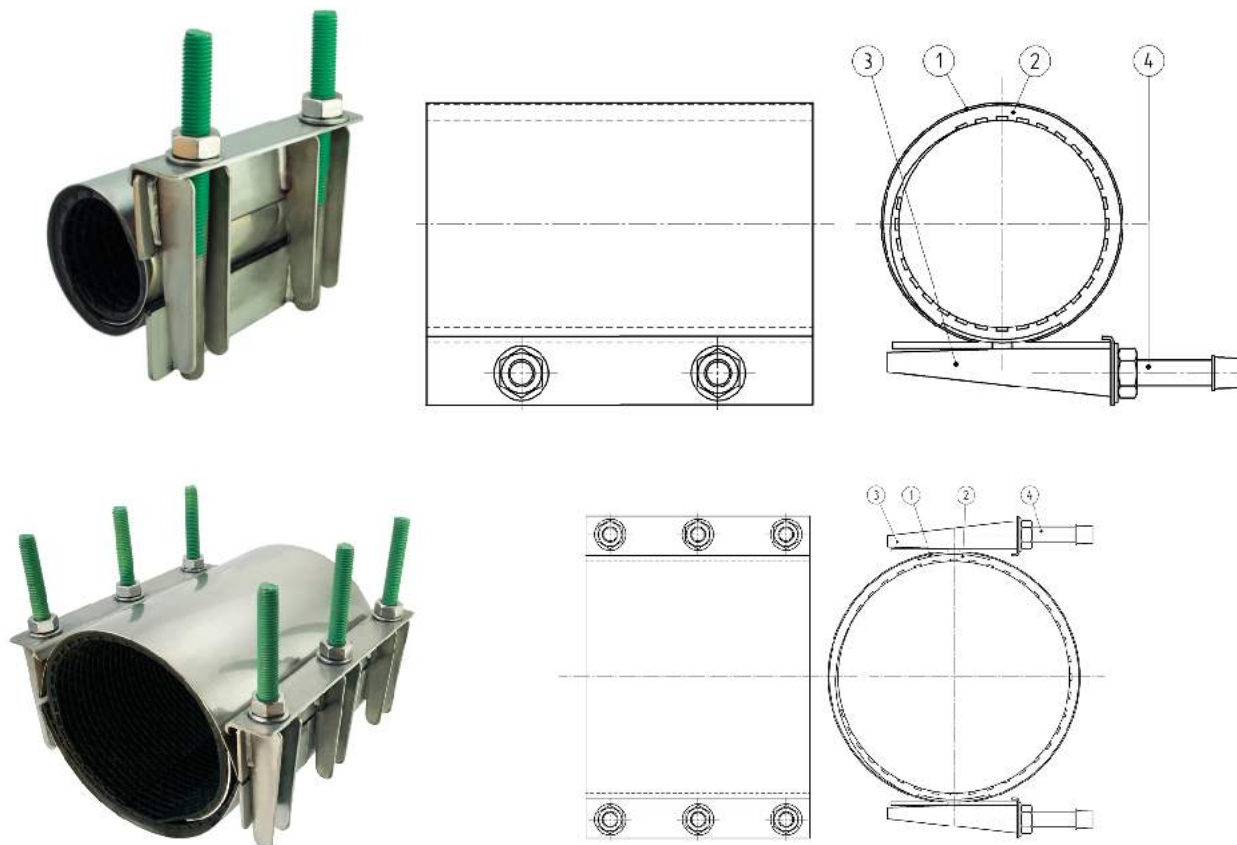
- 1,2 - body - ductile cast iron protected with epoxy powder coating,
- 3 - gasket - EPDM or NBR rubber,
- 4 - band - stainless steel,
- 5-8 - nuts and bolts - galvanized steel,
- optional: nuts and bolts - stainless steel.

The product has been certified as suitable for contact with potable water.

Sample sizes of bands

DN	Diameter [mm] D _{min} - D _{max}	Weight [kg]			Product code
		Length L=200[mm]	Length L=300[mm]	Length L=400[mm]	
50	60 - 68	4,06	-	-	
60	68 - 78	4,15	6,10	-	
65	78 - 88	4,20	-	-	
80	88 - 98	4,25	6,30	8,55	
80	98 - 108	4,40	6,35	-	
100	108 - 118	4,50	6,60	8,85	
100	114 - 126	4,55	6,65	9,10	
125	126 - 138	4,75	6,85	9,50	
125	138 - 150	4,75	6,90	9,50	
125	150 - 162	4,80	7,15	9,60	
150	159 - 171	4,90	7,35	9,80	
150	168 - 182	5,05	7,45	10,10	
200	186 - 198	5,20	7,55	10,40	
200	210 - 223	5,35	7,95	10,70	
200	222 - 234	5,40	8,05	10,80	
200	234 - 246	5,50	8,20	11,00	
250	243 - 255	5,60	8,30	11,20	
250	260 - 272	5,80	8,40	11,60	
250	273 - 285	5,90	8,75	11,80	
275	285 - 297	5,95	8,80	11,90	
275	298 - 310	6,15	9,00	12,30	
300	314 - 326	6,25	9,25	12,50	
300	327 - 340	6,40	9,60	12,80	
350	342 - 355	6,70	9,85	12,90	
350	368 - 380	6,85	9,95	13,00	
350	378 - 390	7,10	10,20	13,10	
400	410 - 432	7,50	10,40	13,30	
450	470 - 492	7,90	10,65	13,55	
500	505 - 535	8,40	10,90	13,80	

Repair clamp "ETERNO"



■ USE:

- For repair of pipelines in water supply networks.

■ MATERIALS:

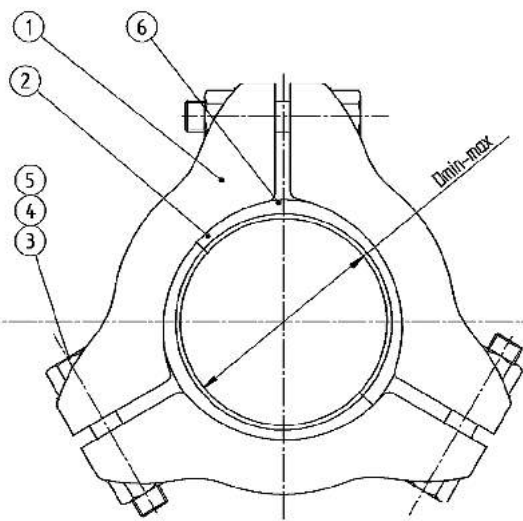
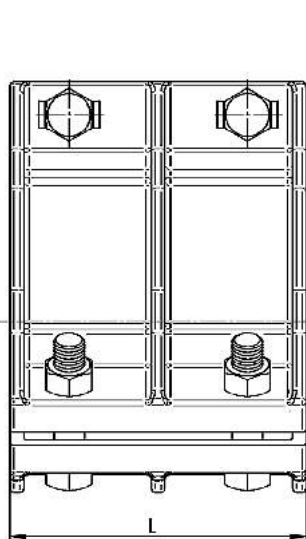
- 1 - band - stainless steel,
- 2 - gasket - EPDM or NBR rubber,
- 3 - tension lock - stainless steel,
- 4 - bolts washers, nuts - galvanized steel,
- optional: nuts and bolts - stainless steel.

The product has been certified as suitable for contact with potable water.

Sample sizes of bands

DN	Diameter [mm] D _{min} - D _{max}	Weight [kg]	Number of bolts	Length [mm] L	Type of band	Product code
50	60 - 67	1,45	2	150	piece	
80	87 - 95	1,60	2	150	piece	
100	108 - 118	2,10	2	200	piece	
125	132 - 142	2,30	2	200	piece	
150	159 - 170	2,50	2	200	piece	
175	186 - 196	2,70	2	200	piece	
200	215 - 225	3,95	2	200	piece	
250	261 - 271	7,00	6	300	two-piece	
300	315 - 335	7,50	6	300	two-piece	
350	360 - 380	7,70	6	300	two-piece	
400	400 - 420	8,50	6	400	two-piece	
500	500 - 520	9,20	6	400	two-piece	

Split collar (three parts) "TREPI"



■ USE:

- Connections and repair pipes made of various materials.

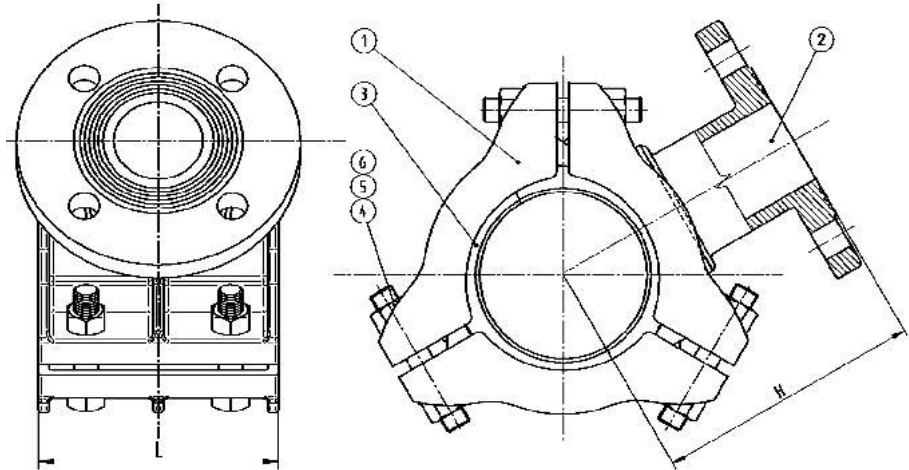
■ MATERIALS:

- 1 - body - ductile cast iron protected with epoxy powder coating,
- 2 - gasket - EPDM or NBR rubber,
- 3-5 - galvanized steel,
- optional: nuts and bolts - stainless steel.

The product has been certified as suitable for contact with potable water.

DN	Diameter [mm] D _{min} - D _{max}	Weight [kg]	Bolts	Length [mm] L	Product code
60	65 - 82	8,00	6xM12	140	
80	87 - 106	9,50	6xM16	170	
100	108 - 126	11,50	6xM16	170	
125	135 - 160	19,00	6xM16	185	
150	159 - 184	18,00	6xM16	220	
175	190 - 220	20,00	9xM16	275	
200	210 - 240	23,00	9xM16	275	
225	240 - 255	24,00	9xM16	280	
250	250 - 288	60,00	9xM20	365	
275	290 - 312	65,00	9xM20	365	
300	312-345 or 302-335	72,00	12XM20	420	
350	360-390 or 350-380	90,00	12XM20	425	
400	410-460 or 400-450	107,00	12XM20	430	
450	460-510 or 450-500	115,00	12XM20	420	
500	510-570 or 500-560	130,00	12XM20	420	
550	570-620 or 560-610	135,00	12XM20	420	
600	620-680 or 610-670	140,00	12XM20	420	
700	730-800 or 720-790	160,00	12XM20	420	
800	810-860 or 800-850	180,00	12XM20	420	

Split collar (three parts) „TREPI FL” with flanged derivation



■ USE:

- For mounting on a pipeline to create a diversion. For the drilling of pipes made from various materials.

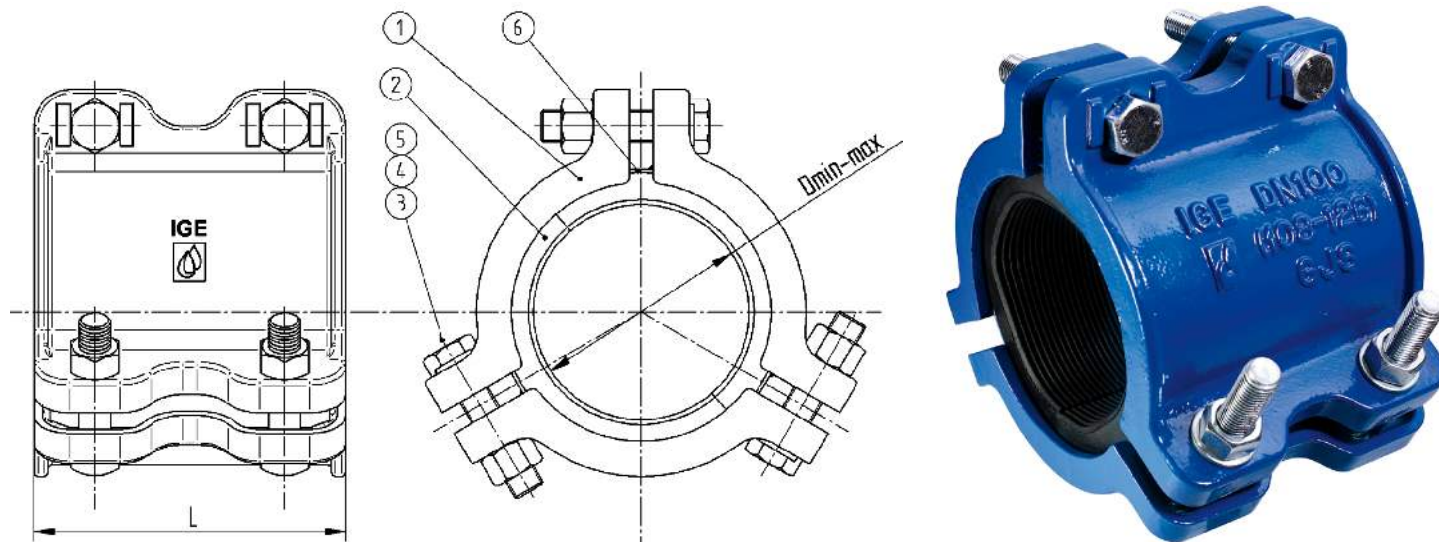
■ MATERIALS:

- 1,2 - body - ductile cast iron protected with epoxy powder coating,
- 3 - gasket - EPDM or NBR rubber,
- 4-6 - galvanized steel,
- optional: nuts and bolts - stainless steel.

The product has been certified as suitable for contact with potable water.

DN	Diameter [mm] D _{min} - D _{max}	Weight [kg]	Bolts	Length [mm] L	Flange DN	H [mm]	Product code
80	87 - 106	14,50	6xM16	170	50-60	½ D+190	
100	108 - 126	16,50	6xM16	170	50-80	½ D+190	
125	135 - 160	24,00	6xM16	185	50-100	½ D+190	
150	159 - 184	25,00	6xM16	220	50-125	½ D+190	
175	190 - 220	26,00	9xM16	275	50-150	½ D+190	
200	210 - 240	31,00	9xM16	275	50-150	½ D+190	
225	240 - 255	32,00	9xM16	280	50-150	½ D+190	
250	250 - 288	68,00	9xM20	365	50-150	½ D+190	
275	290 - 312	75,00	9xM20	365	50-150	½ D+190	
300	312-345 or 302-335	82,00	12XM20	420	50-150	½ D+190	
350	360-390 or 350-380	100,00	12XM20	425	50-150	½ D+190	
400	410-460 or 400-450	117,00	12XM20	430	50-150	½ D+190	
450	460-510 or 450-500	125,00	12XM20	420	50-200	½ D+190	
500	510-570 or 500-560	140,00	12XM20	420	50-200	½ D+190	
550	570-620 or 560-610	145,00	12XM20	420	50-200	½ D+190	
600	620-680 or 610-670	150,00	12XM20	420	50-200	½ D+190	
700	730-800 or 720-790	170,00	12XM20	420	50-200	½ D+190	
800	810-860 or 800-850	190,00	12XM20	420	50-200	½ D+190	

Split collar (three parts) "TREPI - LS"



■ USE:

- For connections and repairs of leaking pipes made from various materials.

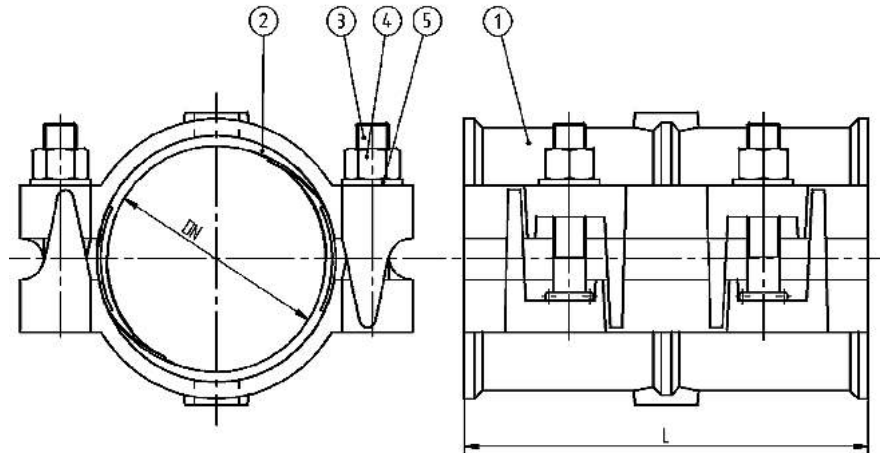
■ MATERIALS:

- 1 - body - ductile cast iron protected with epoxy powder coating,
- 2 - gasket - EPDM or NBR rubber,
- 3-5 - bolts, nuts and washers - galvanized steel.

The product has been certified as suitable for contact with potable water.

DN	Diameter [mm] D _{min} - D _{max}	Weight [kg]	Bolts	Length [mm] L	Product code
80	87 - 106	9,50	6xM12	170	
100	108 - 126	11,50	6xM16	170	
150	159 - 184	18,00	6xM16	235	
200	210 - 240	23,00	9xM16	250	
250	250 - 288	49,00	9xM20	370	
300	312 - 345	55,00	9xM20	370	

Split collar (two-parts) "DUEPI" DN65-DN1200



USE:

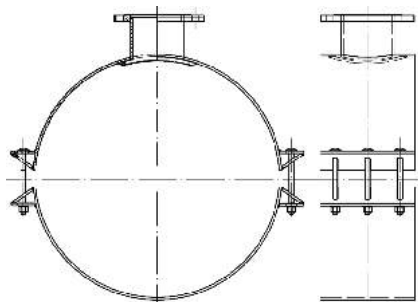
- Connections and repairs to pipes made of different materials.

MATERIALS:

- 1 - body - ductile cast iron protected with epoxy powder coating,
- 2 - gasket - EPDM or NBR rubber,
- 3-5 - galvanized steel,
- optional: nuts and bolts - stainless steel.

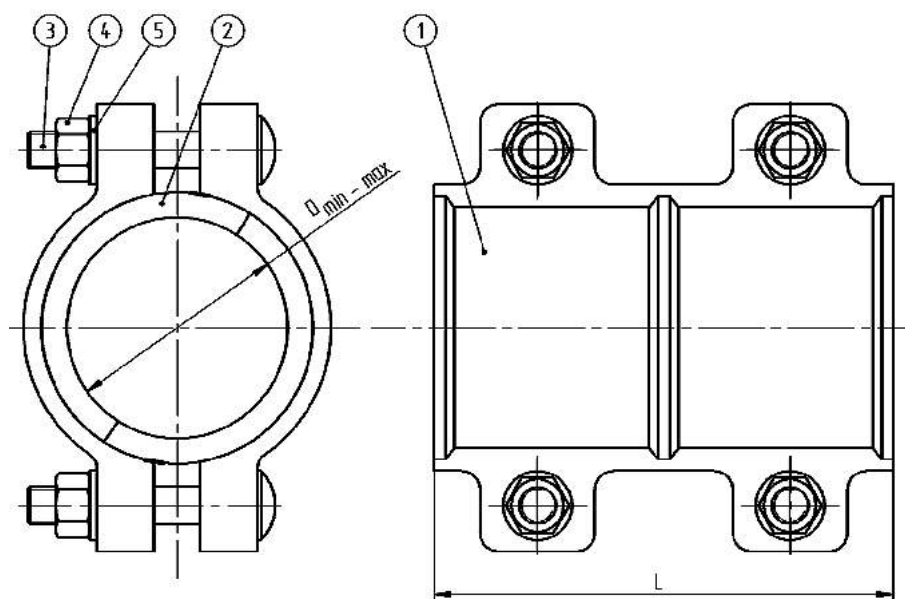
The product has been certified as suitable for contact with potable water.

DN	Diameter [mm] $D_{min} - D_{max}$	Weight [kg]	Number of bolts	Length [mm] L	Product code
65	75 - 84	6,00	4xM12	200	
80	92 - 103	6,50	4xM16	200	
100	115 - 126	7,10	4xM16	200	
125	141 - 154	8,00	4xM16	200	
150	166 - 182	9,50	4xM16	200	
200	216 - 226	11,00	4xM16	200	



We also use engineering steel to make DN 200 - DN 1200 two-part split collars, flanged two-part split collars, adapters to connect different pipe sizes, and other untypical pipe fittings.

Split collar (two-parts) "DUEPI" DN15-DN50



■ USE:

- For steel pipes for pipelines.

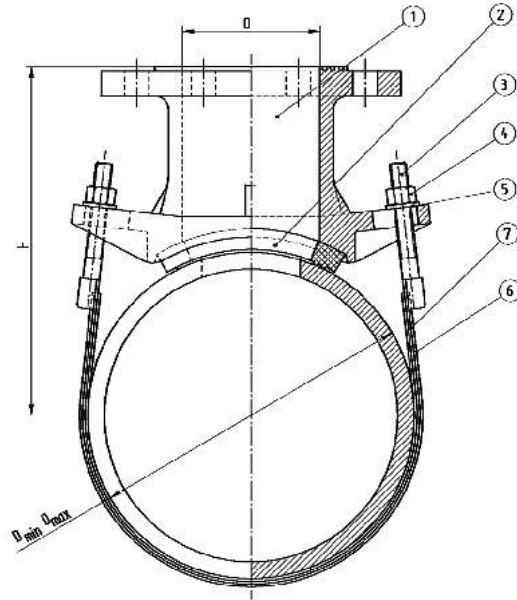
■ MATERIALS:

- 1 - body - ductile cast iron protected with epoxy powder coating,
- 2 - gasket - EPDM or NBR rubber,
- 3-5 - galvanized steel,
- optional: nuts and bolts - stainless steel.

The product has been certified as suitable for contact with potable water.

DN	Diameter [mm] D _{min} - D _{max}	Weight [kg]	Number of bolts	Length [mm] L	Product code
15	20 - 23	2,00	4xM12	120	
20	25 - 28	2,30	4xM12	120	
25	31 - 35	2,60	4xM12	120	
32	41 - 45	3,00	4xM12	135	
40	48 - 52	3,50	4xM12	140	
50	57 - 61	3,60	4xM12	140	

Flanged pipe saddle „RAPIDO FL”



■ USE:

- Flanged pipe saddle designed for use on cast iron , steel pipes and asbestos cement.

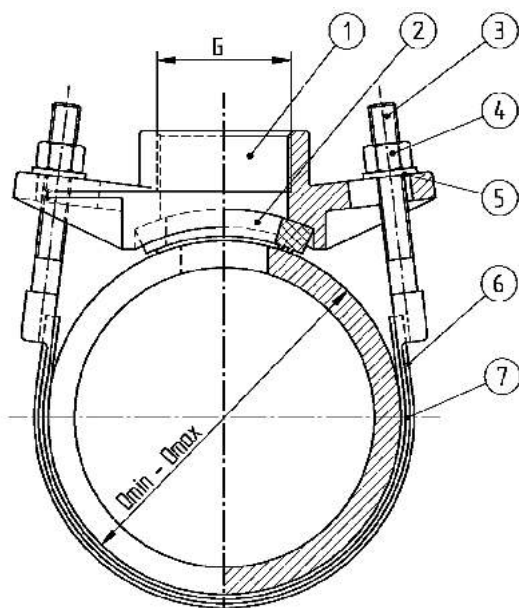
■ MATERIALS:

- 1 - body-ductile cast iron epoxy-powder paint coated,
- 2 - gasket - EPDM or NBR rubber,
- 3-5 - stainless steel,
- 6 - rubber protection,
- 7 - stainless steel.

The product has been certified as suitable for contact with potable water.

DN	Diameter [mm] D _{min} - D _{max}	Weight [kg]	Flange DN	Length [mm] L	Product code
80	90 - 110	7,00	50	½D+140	
100	100 - 130	7,00	50-65	½D+140	
125	135 - 160	8,00	50-80	½D+140	
150	160 - 185	8,00	50-100	½D+140	
175	175 - 195	8,00	50-100	½D+140	
200	210 - 245	9,00	50-100	½D+140	
225	235 - 265	10,00	50-100	½D+140	
250	260 - 305	10,00	50-100	½D+140	
300	310 - 360	11,00	50-100	½D+140	
350	350 - 405	11,00	50-100	½D+140	
400	400 - 455	14,00	50-100	½D+140	
450	455 - 510	14,00	50-100	½D+140	
500	500 - 560	14,00	50-100	½D+140	
600	610 - 665	14,00	50-100	½D+140	
700	720 - 780	22,00	50-100	½D+140	
800	820 - 880	22,00	50-100	½D+140	
1000	1010 - 1070	30,00	50-100	½D+140	

Threaded pipe saddle "RAPIDO FI"



■ USE:

- Clamp connection with the departure of mounting threaded fittings.

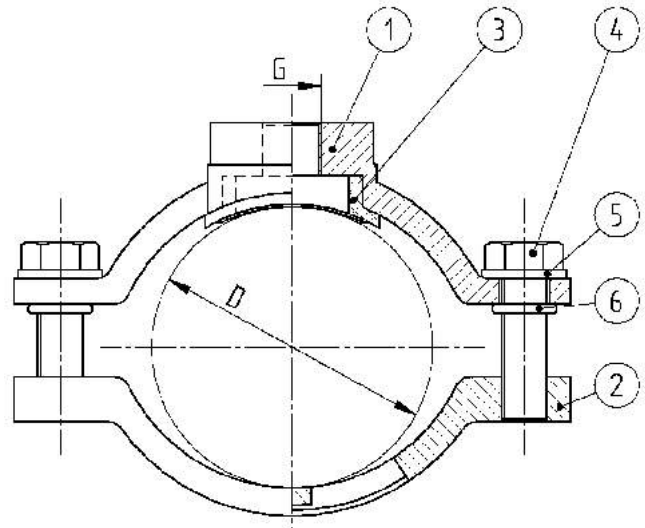
■ MATERIALS:

- 1 - body - ductile cast iron protected with epoxy powder coating,
- 2 - gasket - EPDM or NBR rubber,
- 3-7 - stainless steel,
- 6 - rubber protection.

The product has been certified as suitable for contact with potable water.

DN	Diameter [mm] $D_{min} - D_{max}$	Weight [kg]	Thread [G] from - to	Number of tapes	Product code
50	60 - 78	0,90	$\frac{3}{4}'' - 1\frac{1}{2}''$	1	
60	70 - 88	0,90	$\frac{3}{4}'' - 1\frac{1}{2}''$	1	
80	90 - 110	1,70	1" - 2"	1	
100	100 - 130	1,80	1" - 2"	1	
125	135 - 160	1,85	1" - 3"	1 or 2	
150	160 - 185	1,90	1" - 3"	1 or 2	
175	175 - 196	2,00	1" - 3"	1 or 2	
200	210 - 245	2,20	1" - 3"	1 or 2	
225	235 - 265	2,50	1" - 3"	1 or 2	
250	260 - 305	3,20	1" - 3"	1 or 2	
300	310 - 360	3,50	1" - 3"	2	
400	400 - 455	4,20	1" - 4"	2	
500	500 - 560	10,00	1" - 4"	2	
600	610 - 655	11,50	1" - 4"	2	

Intake collar "RAPIDO FR"



■ USE:

- For tapping every kind of pipe which conveys gas or other fluids.

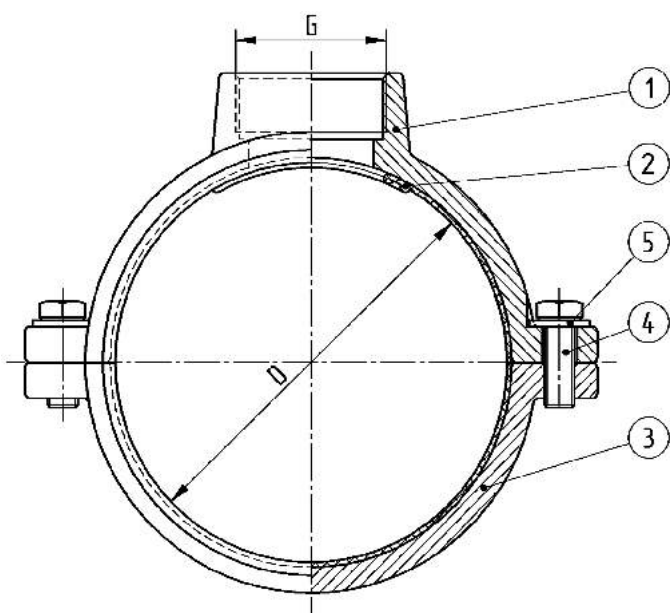
■ MATERIALS:

- 1,2 - body - ductile cast iron protected with epoxy powder coating,
 - 3 - gasket - EPDM or NBR rubber,
 - 4 - bolts - galvanized steel,
 - 5 - washer - galvanized steel,
 - 6 - o - ring - EPDM or NBR rubber.
- Cylindrical thread according to ISO 228 / 1

The product has been certified as suitable for contact with potable water.

DN	Diameter [mm] D _{min} - D _{max}	Weight [kg]	Thread G from - to	Product code
50	59 - 71	1,00	3/4" - 1 1/4"	
60/65	69 - 88	1,55	3/4" - 1 1/4"	
80	88 - 109	1,23	3/4" - 1 1/4"	
100	107 - 128	1,45	3/4" - 1 1/4"	
125	132 - 152	1,60	3/4" - 1 1/4"	
150	158 - 182	1,96	3/4" - 1 1/4"	
200	217 - 234	2,20	3/4" - 1 1/4"	
250	270 - 288	2,50	3/4" - 1 1/4"	
300	311 - 336	2,90	3/4" - 1 1/4"	

Threaded saddle for plastic pipes "RAPIDO PE/BF"



■ USE:

- A collar with a threaded outlet for making service connection on plastic pipes.

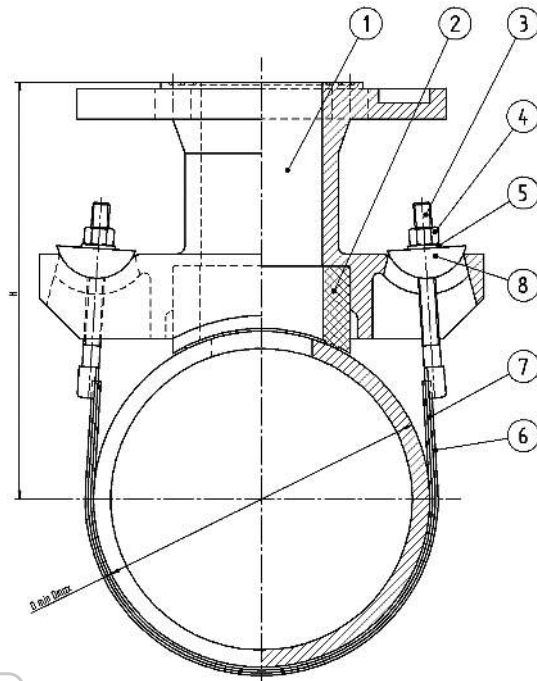
■ MATERIALS:

- 1,2 - body - ductile cast iron protected with epoxy powder coating,
- 3 - gasket - EPDM or NBR rubber,
- 4,5 - stainless steel.

The product has been certified as suitable for contact with potable water.

DN	Diameter [mm] D	Wieht [kg]	Thread G from - to	Length [mm] L	Product code
40	40	1,43	3/4"-1"	100	
50	50	1,65	3/4"-1 1/2"	100	
63	63	1,98	3/4"-1"	100	
75	75	2,28	3/4"-1"	110	
90	90	2,60	3/4"-2"	120	
110	110	3,55	3/4"-2"	120	
125	125	4,38	3/4"-2"	120	
140	140	4,85	3/4"-3"	140	
160	160	5,72	3/4"-4"	150	
180	180	9,40	3/4"-4"	180	
200	200	11,20	3/4"-4"	180	
225	225	11,60	3/4"-4"	180	
250	250	10,60	3/4"-4"	180	
280	280	11,50	2"-4"	180	
315	315	12,80	2"-4"	180	

Flanged pipe saddle "RAPIDO 80-500 DN50"





■ USE:

- Clamp Connection with the departure of flange. For mounting on cast iron, steel and asbestos-cement pipes.

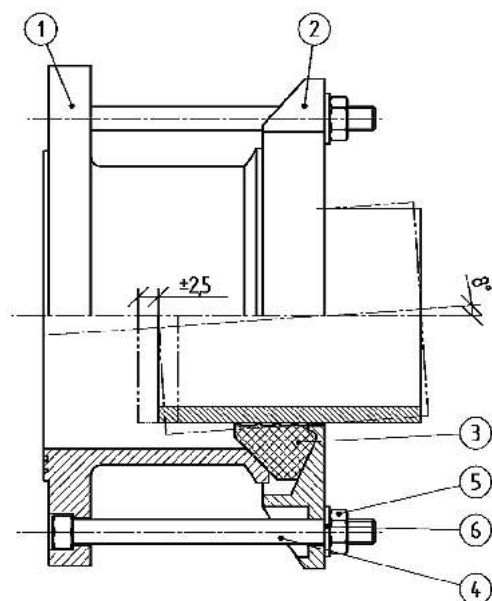
■ MATERIALS:

- 1 - body - ductile cast iron protected with epoxy powder coating,
- 2 - gasket - EPDM or NBR rubber,
- 3-5 - bolts, washers, nuts,
- 6 - clamp - stainless steel A2,
- 7 - rubber protection,
- 8 - washer - galvanized steel,
- optional: stainless steel.

The product has been certified as suitable for contact with potable water.

DN	Diameter [mm] D _{min} -D _{max}	Weight [kg]	Flange DN	H [mm]	Product code
80	87 - 100	5,55	50-65	½D + 120	
100	105 - 125	5,60	50-65	½D + 120	
125	130 - 145	5,65	50-65	½D + 120	
150	157 - 180	5,70	50-65	½D + 120	
175	175 - 200	5,75	50-65	½D + 120	
200	215 - 245	5,80	50-65	½D + 120	
225	240 - 265	5,90	50-65	½D + 120	
250	265 - 295	6,00	50-65	½D + 120	
300	318 - 355	6,10	50-65	½D + 120	
400		6,20	50-65	½D + 120	
500		6,20	50-65	½D + 120	

Wide range flange adaptor "UNIVERSAL FL"



■ USE:

- Connections and installation of fittings for various types of pipelines. Thanks to a special connector seal of a nominal diameter DN fits into many types of pipes.

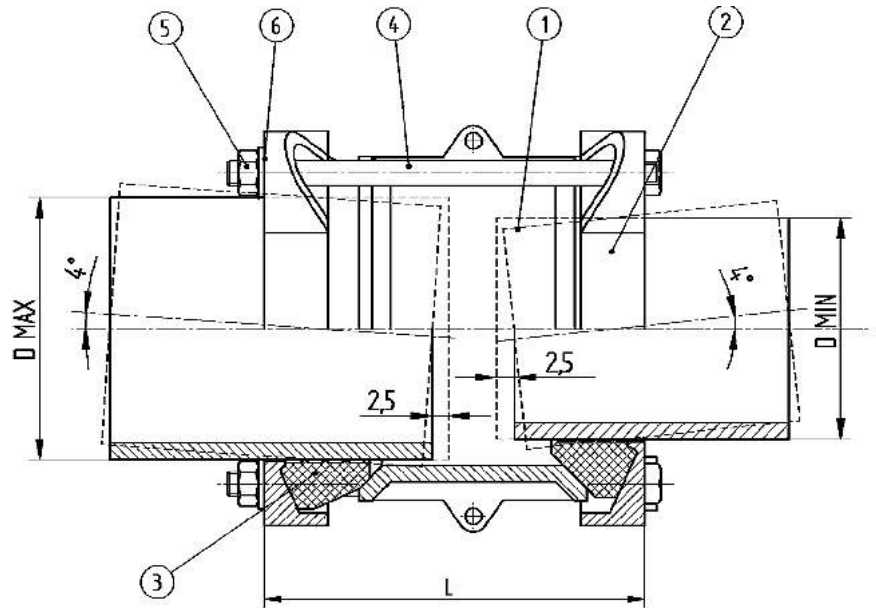
■ MATERIALS:

- 1,2 - body - ductile cast iron protected with epoxy powder coating,
- 3 - gasket - EPDM or NBR rubber,
- 4-6 - galvanized steel,
- optional: nuts and bolts - stainless steel.

The product has been certified as suitable for contact with potable water.

DN	Diameter [mm] D _{min} - D _{max}	Weight [kg]	Number of bolts	Length [mm] L	Product code
40	39 - 69	6,00	4xM12	150	
50	46 - 76	7,00	4xM12	150	
65	57 - 87	9,00	4xM12	150	
80	78 - 108	9,00	4xM12	150	
100	100 - 130	10,00	4xM12	150	
100/125	117 - 147	11,50	4xM12	150	
125/150	129 - 159	12,00	4xM12	150	
150	152 - 182	14,00	4xM16	150	
200	192 - 210	16,00	4xM16	150	
200	198 - 228	20,00	4xM16	150	
250	245 - 280	23,00	6xM16	190	
300	314 - 349	31,00	6xM16	200	

Wide range coupling "UNIVERSAL"



■ USE:

- For the connection of pipes made of different materials, for pipelines with working pressure of 1.6 MPa and temperature max. 50°C.

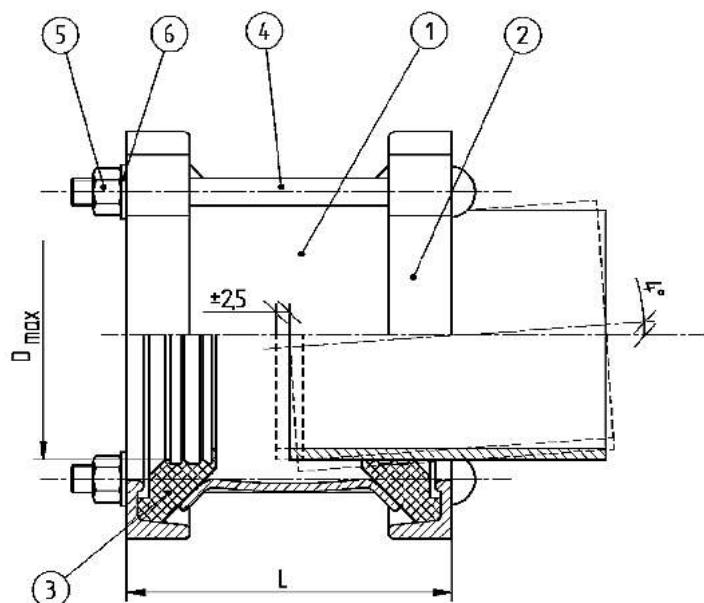
■ MATERIALS:

- 1,2 - body - ductile cast iron protected with epoxy powder coating,
- 3 - gasket - EPDM or NBR rubber,
- 4-6 - galvanized steel,
- optional: nuts and bolts - stainless steel.

The product has been certified as suitable for contact with potable water.

DN	Diameter [mm] D _{min} - D _{max}	Weight [kg]	Number of bolts	Length [mm] L	Product code
30	25 - 55	5,00	3xM12	200	
40	39 - 69	6,00	3xM12	200	
50	46 - 76	7,00	4xM12	200	
65	57 - 87	9,00	4xM12	200	
80	78 - 108	9,00	4xM12	200	
80/100	87 - 117	9,50	4xM12	200	
100	100 - 130	10,00	4xM12	200	
100/125	117 - 147	11,00	4xM12	200	
125	129 - 159	12,00	4xM12	200	
150	152 - 182	14,00	4xM16	200	
175/200	186 - 216	17,00	4xM16	200	
200	198 - 228	20,00	4xM16	200	
225	218 - 253	22,00	4xM16	220	
250	245 - 280	23,00	4xM16	240	
275	266 - 301	27,00	6xM16	270	
300	314 - 349	33,00	6xM16	290	

Medium range coupling "UNIVERSAL BF"



■ USE:

- For the connections pipes made of different materials and connections of pipes a different external diameters. Allows for axial movement and angular deflection. The permissible angular deviation of the pipe connecting the to 4 °. Permissible axial displacement of ± 2.5 mm gasket.

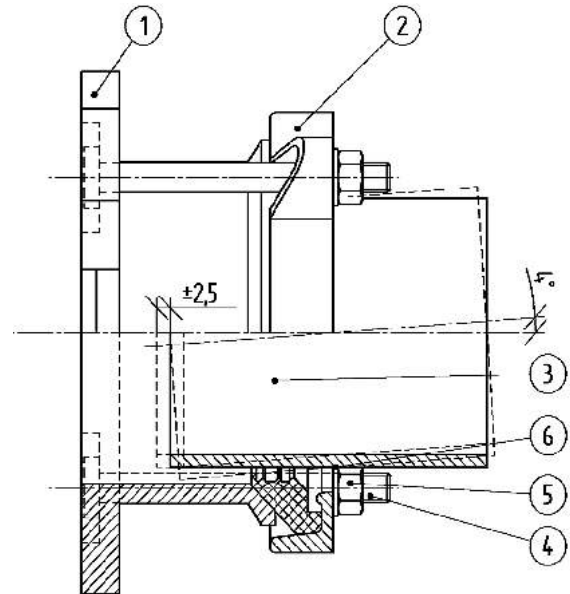
■ MATERIALS:

- 1,2 - body - ductile cast iron protected with epoxy powder coating,
- 3 - gasket - EPDM or NBR rubber,
- 4-6 - galvanized steel,
- optional: nuts and bolts - stainless steel.

The product has been certified as suitable for contact with potable water.

DN	Diameter [mm] D _{min} - D _{max}	Weight [kg]	Number of bolts	Length [mm] L	Product code
40	48-60	2,90	2xM12	150	
50	59-72	3,20	4xM12	150	
65	72-85	3,20	2xM12	140	
80	88-103	4,20	4xM12	150	
100	108-128	5,10	4xM12	150	
125	132-146	5,90	4xM12	150	
125/150	138-153	6,50	4xM12	150	
150	159-182	7,70	4xM12	180	
175	192-210	9,10	4xM12	200	
200	218-235	9,90	4xM12	200	
225	230-247	13,55	6xM12	200	
250	250-267	14,50	6xM12	200	
250	272-289	16,50	6xM12	200	
300	315-332	23,50	8xM12	240	
300	322-339	29,00	6xM12	240	
300	332-349	30,00	6xM12	240	
300	352-368	31,00	6xM12	240	
350	350-374	31,90	8xM12	240	
350	374-391	33,00	8xM12	240	
400	400-429	38,50	6xM16	240	
400	418-435	40,00	6xM16	240	
400	425-442	40,70	6xM16	240	
450	476-493	47,30	10xM16	240	
500	500-532	35,00	10xM16	240	
500	527-544	53,90	10xM16	240	
600	600-630	41,00	10xM16	240	
600	630-647	41,00	10xM16	240	

Medium range flange adaptor "UNIVERSAL BF/FL"



■ USE:

- Flange connection pipes of different material types or external diameters. Allows for axial movement and angular deflection.

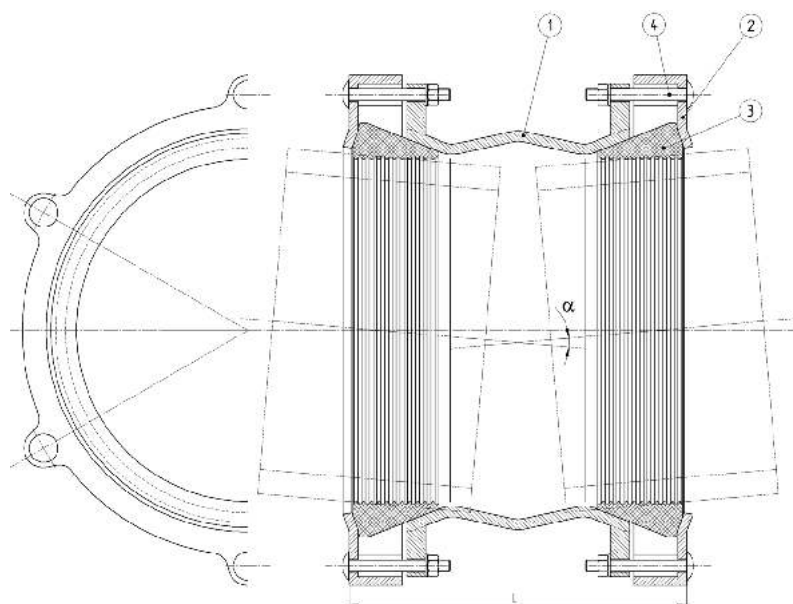
■ MATERIALS:

- 1,2 - body - ductile cast iron protected with epoxy powder coating,
- 3 - gasket - EPDM or NBR rubber,
- 4-6 - galvanized steel,
optional: nuts and bolts - stainless steel.

The product has been certified as suitable for contact with potable water.

DN	Diameter [mm] D _{min} - D _{max}	Weight [kg]	Number of bolts	Length [mm] L	Product code
40	48-60	3,00	2xM12	100	
50	59-72	3,30	2xM12	100	
65	72-85	4,00	2xM12	100	
80	88-103	4,90	4xM12	105	
100	108-128	5,00	4xM12	105	
125/150	132-146	7,00	4xM12	105	
125/150	138-153	7,10	4xM12	105	
150	159-182	7,60	4xM12	105	
175/200	192-210	10,00	4xM12	105	
200	218-235	13,00	4xM12	105	
225	230-247	13,50	4xM12	105	
250	250-267	14,00	4xM12	115	
250	272-289	19,00	6xM12	115	
300	315-332	19,00	6xM12	115	
300	322-339	21,00	6xM12	115	
300	332-349	17,00	6xM12	115	
350	350-374	41,50	8xM16	120	
350	374-391	42,00	8xM16	120	
400	400-429	49,50	8xM16	120	
400	418-435	51,00	8xM16	120	
400	425-442	52,80	8xM16	120	
450	476-493	61,60	10xM16	140	
500	500-532	67,10	10xM16	140	
500	527-544	68,20	10xM16	140	
600	600-630	76,40	10xM16	140	
600	630-647	84,70	10xM16	140	

Pipe coupling "UNIVERSAL GT"



■ USE:

- For the connections pipes made of different materials and connections of pipes a different external diameters. The permissible angular deviation of the pipe connecting the to 8°.

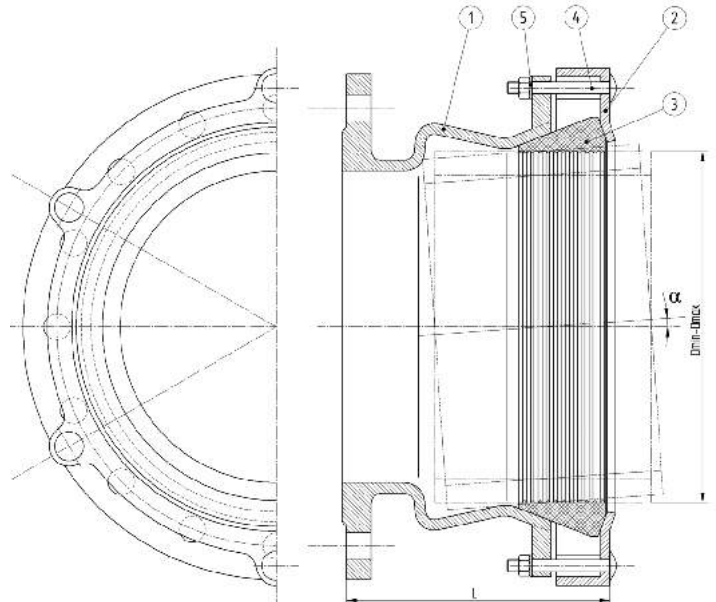
■ MATERIALS:

- 1,2 - body - ductile cast iron protected with epoxy powder coating,
- 3 - gasket - EPDM or NBR rubber,
- 4 - nuts and bolts - galvanized steel,
- optional: nuts and bolts - stainless steel.

The product has been certified as suitable for contact with potable water.

DN	Diameter [mm] D _{min} - D _{max}	Weight [kg]	Number of bolts	Length [mm] L	Product code
50	40 - 75	7,00	8xM14	300	
80	80 - 115	9,00	8xM14	300	
100	105 - 135	10,20	8xM14	300	
150	155 - 195	14,70	8xM14	300	
200	215 - 258	24,00	8xM14	340	
250	270 - 310	26,00	12xM16	360	
300	310 - 350	32,60	12xM16	360	
400	395 - 435	40,00	12xM16	360	

Flange adaptor "UNIVERSAL GT/FL"



■ USE:

- For the connections pipes made of different materials and connections of pipes a different external diameters. The permissible angular deviation of the pipe connecting the to 8°.

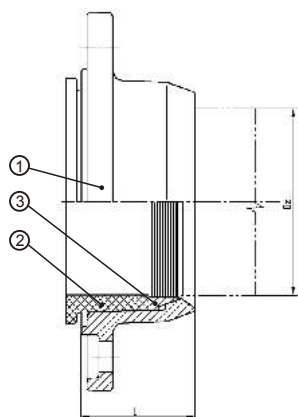
■ MATERIALS:

- 1,2 - body - ductile cast iron protected with epoxy powder coating,
- 3 - gasket - EPDM or NBR rubber,
- 4,5 - nuts and bolts - galvanized steel,
- optional: nuts and bolts - stainless steel.

The product has been certified as suitable for contact with potable water.

DN	Diameter [mm] D _{min} - D _{max}	Weight [kg]	Number of bolts	Length [mm] L	Product code
40/50	40 - 75	7,00	4xM14	200	
80	80 - 115	9,00	4xM14	240	
100	105 - 135	15,00	4xM14	240	
150	155 - 195	24,00	4xM16	270	
200	215 - 258	30,00	6xM14	270	
250	270 - 310	39,00	6xM16	290	
300	310 - 350	49,00	6xM16	290	
400	395 - 435	62,00	6xM16	300	

Flange adaptor "FACILE"



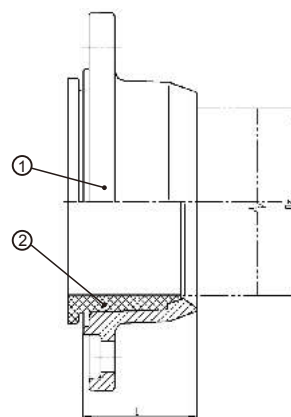
FACILE R (with restraining system)

■ USE:

- Quick flange adaptor without restraining system for PVC/PE pipes.

■ MATERIALS:

- 1 - body - ductile cast iron protected with epoxy powder coating,
- 2 - gasket - EPDM or NBR rubber,
- 3 - ring clamp - brass.



FACILE PVC (without restraining system)

■ USE:

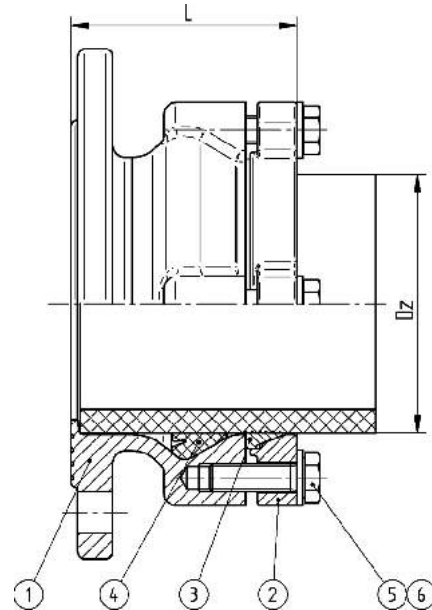
- Quick flange adaptor without restraining system for PVC/PE pipes.

■ MATERIALS:

- 1 - body - ductile cast iron protected with epoxy powder coating,
- 2 - gasket - EPDM or NBR rubber.

The product has been certified as suitable for contact with potable water.

Type	DN	PN	Weight [kg]	Product code	Type	DN	PN	Weight [kg]	Product code
PVC/PE 63	50	10/16	1,8		PVC/PE 63	50	10/16	1,9	
PVC/PE 75	65	10/16	2,3		PVC/PE 75	65	10/16	2,4	
PVC/PE 90	80	10/16	2,5		PVC/PE 90	80	10/16	2,6	
PVC/PE 110	100	10/16	3,1		PVC/PE 110	100	10/16	3,3	
PVC/PE 125	125	10/16	4,0		PVC/PE 125	125	10/16	4,2	
PVC/PE 140	125	10/16	4,1		PVC/PE 140	125	10/16	4,3	
PVC/PE 160	150	10/16	5,2		PVC/PE 160	150	10/16	5,5	
PVC/PE 200	200	10/16	7,9		PVC/PE 200	200	10/16	8,1	

Flanged fitting "FABO"

USE:

- Connections and installation of fittings for pipelines made of PVC and PE pipes.

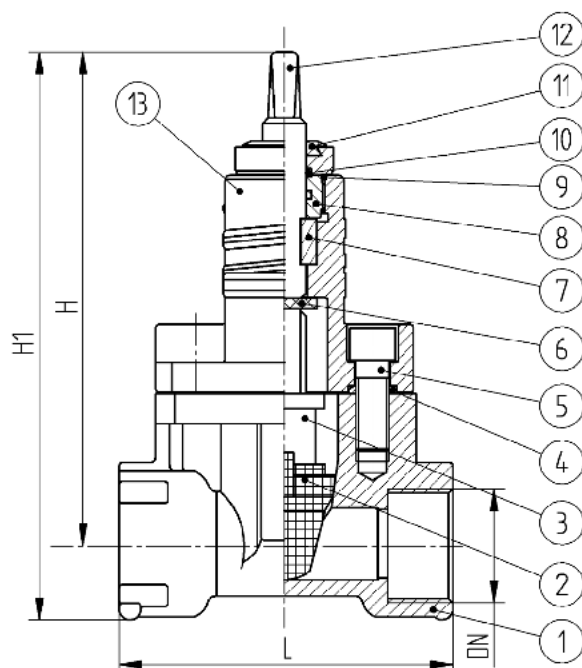
MATERIALS:

- 1,2 - body, flange - ductile cast iron protected with epoxy powder coating,
- 3 - grip ring - brass,
- 4 - gasket - EPDM rubber,
- 5,6 - bolts, washers - galvanized steel,
- optional: stainless steel.

The product has been certified as suitable for contact with potable water.

DN	Diameter [mm] Dz	Weight [kg]	Length [mm] L	Product code
50	63	3,50	90	
80	90	5,10	95	
100	110	6,70	95	
150	160	9,50	120	
200	225	16,00	135	
300	315	33,15	330	

Gate valve "EUROPA H"



■ USE:

- For installation of water supply household connections.
- Compliance with BS EN 545 and PN-92/M-740001.

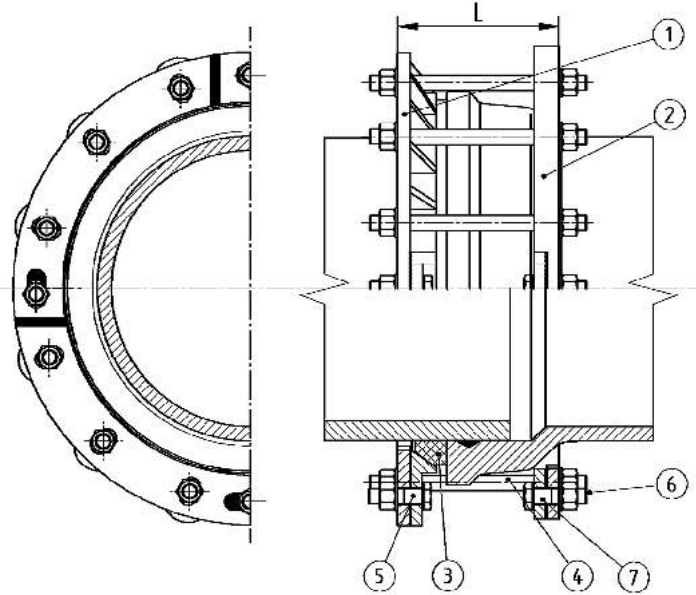
■ MATERIALS:

- 1 - body - ductile cast iron protected with epoxy powder coating,
- 2 - wedge coating- EPDM/NBR rubber,
- 3 - wedge - brass,
- 4 - o-ring - EPDM/NBR,
- 5 - bolt - galvanized steel,
- 6 - gasket - EPDM or NBR rubber,
- 7 - ring - brass,
- 8 - nut - brass,
- 9 - o-ring - EPDM/NBR,
- 10 - o-ring - EPDM/NBR,
- 11 - gasket - EPDM or NBR rubber,
- 12 - stem - stainless steel,
- 13 - cover - ductile cast iron protected with epoxy powder coating.

The product has been certified as suitable for contact with potable water.

DN	Diameter [mm] L	Length [mm] H	Length [mm] H1	Weight [kg]	Product code
1 1/4"	123	182	210	4,20	

Adjustable bell joint repair clamp „STOP”



■ USE:

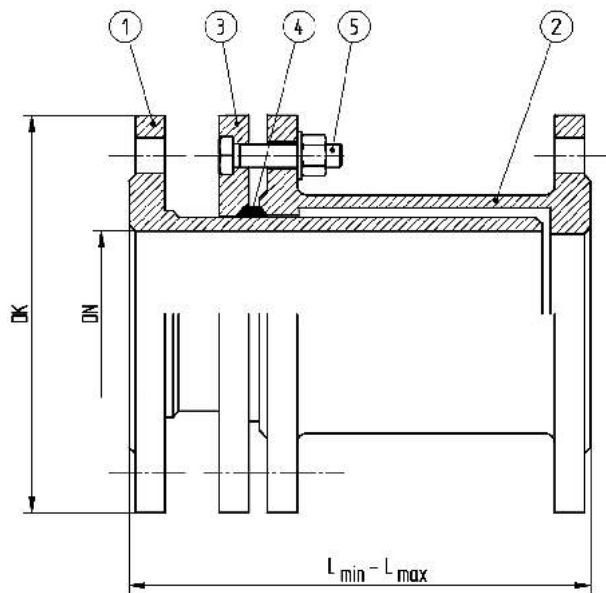
- Additional seal flare connections cast iron pipes.

■ MATERIALS:

- 1,2 - body - ductile cast iron protected with epoxy powder coating,
- 3 - gasket - EPDM or NBR rubber,
- 4-7 - galvanized steel,
- optional: nuts and bolts - stainless steel.

The product has been certified as suitable for contact with potable water.

DN	Diameter [mm] D _{min} - D _{max}	Weight [kg]	Number of bolts	Length [mm] L	Product code
50	68 - 73	4,00	4	120	
60	77 - 82	6,50	6	120	
80	100 - 106	8,50	6	120	
100	120 - 126	10,50	6	180	
125	146 - 156	11,00	6	180	
150	172 - 180	12,00	6	180	
175	204 - 218	14,00	6	180	
200	224 - 240	16,00	8	180	
225	250 - 266	19,00	12	180	
250	276 - 294	23,00	12	180	
275	302 - 310	25,00	12	180	
300	328 - 346	27,00	12	180	
350	380 - 398	31,00	16	180	
400	432 - 458	37,00	15	180	
450	484 - 512	43,00	15	180	
500	536 - 564	46,00	20	180	
600	638 - 666	62,00	25	180	
700	740 - 770	65,00	25	180	
800	846 - 886	78,00	32	180	
1000	1050 - 1092	94,00	36	180	
1200	1235 - 1329	139,00	40	180	



■ **USE:**

- To adjust the length of the pipeline when the valve mounting flange and the security of the pipeline in the presence of stress in the network.

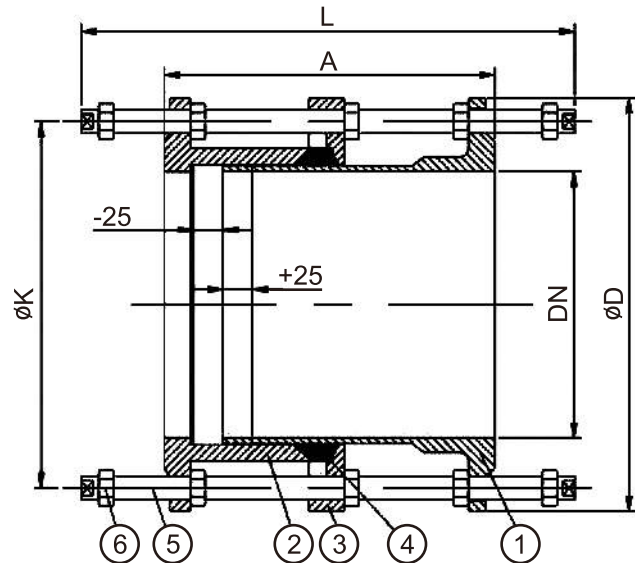
■ **MATERIALS:**

- 1-3 - body - ductile cast iron protected with epoxy powder coating,
- 4 - gasket - EPDM rubber,
- 5 - bolts, washers, nuts - galvanized steel,
- optional: bolts, washers, nuts - stainless steel.

The product has been certified as suitable for contact with potable water.

DN	Length [mm] $L_{min} - L_{max}$	Flange DK	Weight [kg]	Product code
50	223 - 340	165	12,0	
80	226 - 345	200	15,0	
100	290 - 465	220	22,0	
150	320 - 520	285	34,0	

Dismantling joints "DJ - F3"



USE:

- Water supply. Flanged connections pipes of the same diameter.
Element for easy assembly and disassembly fittings.

MATERIALS:

- 1 - body - ductile cast iron protected with epoxy powder coating,
- 2 - flange - ductile cast iron protected with epoxy powder coating,
- 3 - retaining flange - ductile cast iron protected with epoxy powder coating,
- 4 - gasket - EPDM rubber,
- 5 - bolts - galvanized steel,
- 6 - nut - galvanized steel,
- optional: nuts and bolts - stainless steel.

The product has been certified as suitable for contact with potable water.

DN	PN10			PN16			Product code
	Length [mm] A	Diameter [mm] D	Diameter [mm] K	Length [mm] A	Diameter [mm] D	Diameter [mm] K	
80	200	200	160	160	200	160	
100	200	220	180	180	220	180	
125	200	250	210	210	250	210	
150	200	285	240	240	285	240	
200	220	340	295	295	340	295	
250	220	400	350	350	400	355	
300	220	455	400	400	455	410	
350	230	505	460	460	520	470	
400	230	565	515	515	580	525	
450	250	615	565	565	640	585	
500	260	670	620	620	715	650	
600	260	780	725	725	840	770	
700	260	895	840	840	910	840	
800	290	1010	950	950	1025	950	
900	290	1115	1050	1050	1125	1050	
1000	290	1230	1160	1160	1255	1170	
1200	320	1455	1380	1380	1485	1390	

- Drilling Machine description is a machine for under pressure tapping of water or gas mains. The machine is made of galvanized steel for corrosion protection. It features a simple yet sturdy design and has a wide range of use. The machine is capable of drilling holes from DN 25 to DN 150 for derivations from gas and water pipes with working pressure up to 12 bars. The machine will make a quality tap in every type of material provided the appropriate drilling core bit is selected.

The advantage of the machine is its capability to control and maintain a steady pressure of the drill onto the pipe. This can be done thanks to the special pressing clutch spring which ensures fast drilling with low effort. The drilled material does not crumble and it is totally recovered after the tapping is completed since the pressure onto the pipe is evenly distributed.

The machine can perform tapping in every position, and it can work on threaded and flanged pipes. The machine is driven manually with a ratchet wrench. The tool is delivered in a steel box.

■ CHARAKTERYSTYKA PRACY

→ UNIVERSALE TYE 22

Diameter range: from 1" to 6"

Effective feed: 220 mm

Maximum drilling depth: 600 mm

Standard version: operated manually with a ratchet wrench (crank handle).



→ UNIVERSALE TYPE 20

Diameter range: from 1/2" to 2"

Effective feed: 160 mm

Maximum drilling depth: 360 mm

Standard version: operated manually with a ratchet wrench (crank handle).



■ The package includes:

- 1 - body
- 2 - drilling core bits for steel and cast iron with diameters from 22 mm to 140 mm and with pilot
- 3 - body extensions
- 4 - ratchet wrench with a crank handle
- 5 - a set of wrenches and screwdrivers needed for proper use of the tool.

The tool can also accept a pneumatic or hydraulic drive that can be fitted instead of the ratchet wrench without any modifications.



**NARODOWY INSTYTUT ZDROWIA PUBLICZNEGO
- PAŃSTWOWY ZAKŁAD HIGIENY**

**NATIONAL INSTITUTE OF PUBLIC HEALTH
- NATIONAL INSTITUTE OF HYGIENE**

**ZAKŁAD HIGIENY KOMUNALNEJ
DEPARTMENT OF ENVIRONMENTAL HYGIENE**

24 Chocimska 00-791 Warsaw • Phone (22) 5421354; (22) 5421349 • Fax (22) 5421287 • e-mail: sek-zhk@pzh.gov.pl

**ATEST HIGIENICZNY
HYGIENIC CERTIFICATE**

HK/W/0400/01/2011

ORYGINAL

Wyrób / product: **Armatura i kształtki wodociągowe**

Zawierający / containing: żeliwo sferoidalne, farbę proszkową epoksydową, EPDM, stal ocynkowaną, stal nierdzewną

Przeznaczony do / destined: naprawy i budowy sieci wodociągowej służącej do przesyłania wody przeznaczonej do spożycia przez ludzi

Wymieniony wyżej produkt odpowiada wymaganiom higienicznym przy spełnieniu następujących warunków / is acceptable according to hygienic criteria with the following conditions:

- bez zastrzeżeń

Wytwórca / producer:

IGE Spółka z Ograniczoną Odpowiedzialnością
58-250 Pieszyce
ul. Sienkiewicza 2

Niniejszy dokument wydano na wniosek / this certificate issued for:

IGE Spółka z Ograniczoną Odpowiedzialnością
58-250 Pieszyce
ul. Sienkiewicza 2

Atest może być zmieniony lub unieważniony po przedstawieniu stosownych dowodów przez którąkolwiek stronę. Niniejszy atest traci ważność po 2016-05-13 lub w przypadku zmian w recepturze albo w technologii wytwarzania wyrobu.

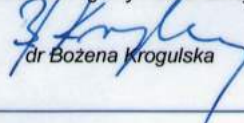
**The certificate may be corrected or cancelled after appropriate motivation.
The certificate loses its validity after 2016-05-13
or in the case of changes in composition or in technology of production.**

Data wydania atestu higienicznego: 13 maja 2011

The date of issue of the certificate: 13th May 2011

Reprodukowanie, kopiowanie, fotografowanie, skanowanie, digitalizacja Atestu Higienicznego w celach marketingowych bez zgody NIZP-PZH jest zabronione.

Kierownik
Zakładu Higieny Komunalnej



dr Bożena Krogulska

mgr T. Prokuby

www.pzh.gov.pl